

Cabana™

COLLECTION & SUITES

Made with
Sustainable
Syncrylic™



Destination home



Cabana Suite™

Destination home...

Product features:

- ✓ Built-in Fold-up Table, perfect for holding drinks, games and more
- ✓ Built-in Cooler to keep drinks cold
- ✓ True Form Pillows
- ✓ Fountain with LED Back light
- ✓ Adjustable Two-Tone Jets
- ✓ Two-Tone air controls
- ✓ Footwell LED Light
- ✓ Corner LED Lights
- ✓ Spa Cover made with Weathershield Material

CABANA SPA INCLUDING OPTIONAL SUITE PACKAGE SHOWN:

- ✓ Easy Access Luxury Steps with Handrail includes Side Well
- ✓ Lockable Planters plus Storage Compartments underneath the top step
- ✓ Built-in Cover Lifter to make removing and replacing your spa's cover simple



Made with Sustainable
Syncrylic™

Choose from four *Syncrylic™* Body Colours with complementary side panels, pillows, jets and covers!

Syncrylic™ is a proprietary formula designed to be lighter and more durable than standard acrylic, available only on Cabana Suite Spa Collection, Crossover Collection and Stonehenge Collection Spas made by Dream Maker Spas, a world-class innovator in spa design and manufacturing.

Syncrylic™ was created to offer the best of both worlds, having the beautiful appearance of acrylic while maintaining the tough, impact-resistant qualities of high-grade polyethylene. Choose from four contemporary colours: Black Diamond, Sahara Diamond, Mystic Diamond and White Diamond.

White Diamond with Espresso Panels



White Diamond with Grey Panels



White Diamond with Black Panels



Black Diamond with Grey Panels



Black Diamond with Black Panels



Mystic Diamond with Black Panels



Sahara Diamond with Dark Brown Panels



Cabana™

COLLECTION & SUITES

Made With Sustainable
Syncrylic™



Cabana 2500 L

The Cabana 2500 L is Dream Maker Spas' plug and play, 25 Jet, 4 person "LOUNGER" style spa with contoured bucket seats and directional jets providing individual water pressure control. With a Syncrylic™ unibody construction that is virtually indestructible, this energy efficient model comes with a built in cooler, fold up table, Weathershield Super Seal Cover, digital controls, Easy Klean/Convex2 Filtration, and adjustable water fountain with LED programmable back lighting — All the benefits of a luxury spa at a fraction of the price. The all-inclusive, easy to install and lightweight design makes the Cabana 2500 L perfect for lounging and entertaining.

SPECIFICATIONS

Seating:	4 person	Controls:	Digital
Dimensions:	203 x 203 x 86 cm**	Pump:	1 x two speed pump - 3 HP
Spa Volume:	1189 litres	Water Feature:	Fountain Waterfall with Backlit LED Light
Dry Weight:	189 kg	Filtration:	Easy Klean / Convex2
Jets:	25 Stainless Steel	Insulation:	Polyurethane Foam
Pillows:	3	Ozone:	Included
Electrical:	230V PH-N-PE	Ambiance LED Lighting Package:	Optional
Heating:	3kW	Bluetooth Audio:	Optional

*Optional Suite Package shown.

**Specifications subject to change. Dimensions vary 1,25 cm.

Cabana™

COLLECTION & SUITES

Made With Sustainable
Syncrylic™

Plug & Play



Cabana 2500 S

The Cabana 2500 S is Dream Maker Spas' plug and play, 25 Jet, all seats, 5-6 person spa with contoured bucket seats and directional jets providing individual water pressure control. With a Syncrylic™ unibody construction that is virtually indestructible, this energy efficient model comes with a built in cooler, fold up table, Weathershield Super Seal Cover, digital controls, Easy Kleen/Convex2 Filtration, and adjustable water fountain with LED programmable back lighting — All the benefits of a luxury spa at a fraction of the price. The all-inclusive, easy to install and lightweight design makes the Cabana 2500 S perfect for lounging and entertaining.

SPECIFICATIONS

Seating:	5-6 person	Controls:	Digital
Dimensions:	203 x 203 x 86 cm**	Pump:	1 x two speed pump - 3 HP
Spa Volume:	1189 litres	Water Feature:	Fountain Waterfall with Backlit LED Light
Dry Weight:	189 kg	Filtration:	Easy Kleen / Convex2
Jets:	25 Stainless Steel	Insulation:	Polyurethane Foam
Pillows:	3	Ozone:	Included
Electrical:	230V PH-N-PE	Ambiance LED Lighting Package:	Optional
Heating:	3kW	Bluetooth Audio:	Optional

*Optional Suite Package shown.

**Specifications subject to change. Dimensions vary 1,25 cm.

Cabana™

COLLECTION & SUITES

Made With Sustainable
Syncrylic™



Cabana 3500 L

The Cabana 3500 L is Dream Maker Spas' 2 Pump, 35 Jet, 4 person "LOUNGER" style spa with contoured bucket seats and directional jets providing individual water pressure control. With a Syncrylic™ unibody construction that is virtually indestructible, this energy efficient model comes with a built in cooler, fold up table, Weathershield Super Seal Cover, digital controls, Easy Kleen/Convex2 Filtration, and adjustable water fountain with LED programmable back lighting. You gain all the benefits of a luxury spa at a fraction of the price. The all-inclusive, easy to install and lightweight design makes the Cabana 3500 L perfect for lounging and entertaining.

SPECIFICATIONS

Seating:	4 person	Controls:	Digital
Dimensions:	203 x 203 x 86 cm***	Pumps:	1 x two speed pump, 1 x one speed pump - 3 HP
Spa Volume:	1189 litres	Water Feature:	Fountain Waterfall with Backlit LED Light
Dry Weight:	198 kg	Filtration:	Easy Kleen / Convex2
Jets:	35 Stainless Steel	Insulation:	Polyurethane Foam
Pillows:	3	Ozone:	Included
Electrical:	230V PH-N-PE minimum	Ambiance LED Lighting Package:	Optional
Heating:	3kW	Bluetooth Audio:	Optional

*Depending on local power supply (2-pump Plug & Play is based on a 16A/230V power supply).

**Optional Suite Package shown.

**Specifications subject to change. Dimensions vary 1,25 cm.



Cabana 3500 S

The Cabana 3500 S is Dream Maker Spas' 2 Pump, 35 Jet, all seats, 5-6 person spa with contoured bucket seats and directional jets providing individual water pressure control. With a Syncrylic™ unibody construction that is virtually indestructible, this energy efficient model comes with a built in cooler, fold up table, Weathershield Super Seal Cover, digital controls, Easy Kleen/Convex2 Filtration, and adjustable water fountain with LED programmable back lighting. You gain all the benefits of a luxury spa at a fraction of the price. The all-inclusive, easy to install and lightweight design makes the Cabana 3500 S perfect for lounging and entertaining.

SPECIFICATIONS

Seating:	5-6 person	Controls:	Digital
Dimensions:	203 x 203 x 86 cm***	Pumps:	1 x two speed pump, 1 x one speed pump - 3 HP
Spa Volume:	1189 litres	Water Feature:	Fountain Waterfall with Backlit LED Light
Dry Weight:	198 kg	Filtration:	Easy Kleen / Convex2
Jets:	35 Stainless Steel	Insulation:	Polyurethane Foam
Pillows:	3	Ozone:	Included
Electrical:	230V PH-N-PE minimum	Ambiance LED Lighting Package:	Optional
Heating:	3kW	Bluetooth Audio:	Optional

*Depending on local power supply (2-pump Plug & Play is based on a 16A/230V power supply).

**Optional Suite Package shown.

**Specifications subject to change. Dimensions vary 1,25 cm.

*Optional Suite Package and Umbrella Sunscreen shown.

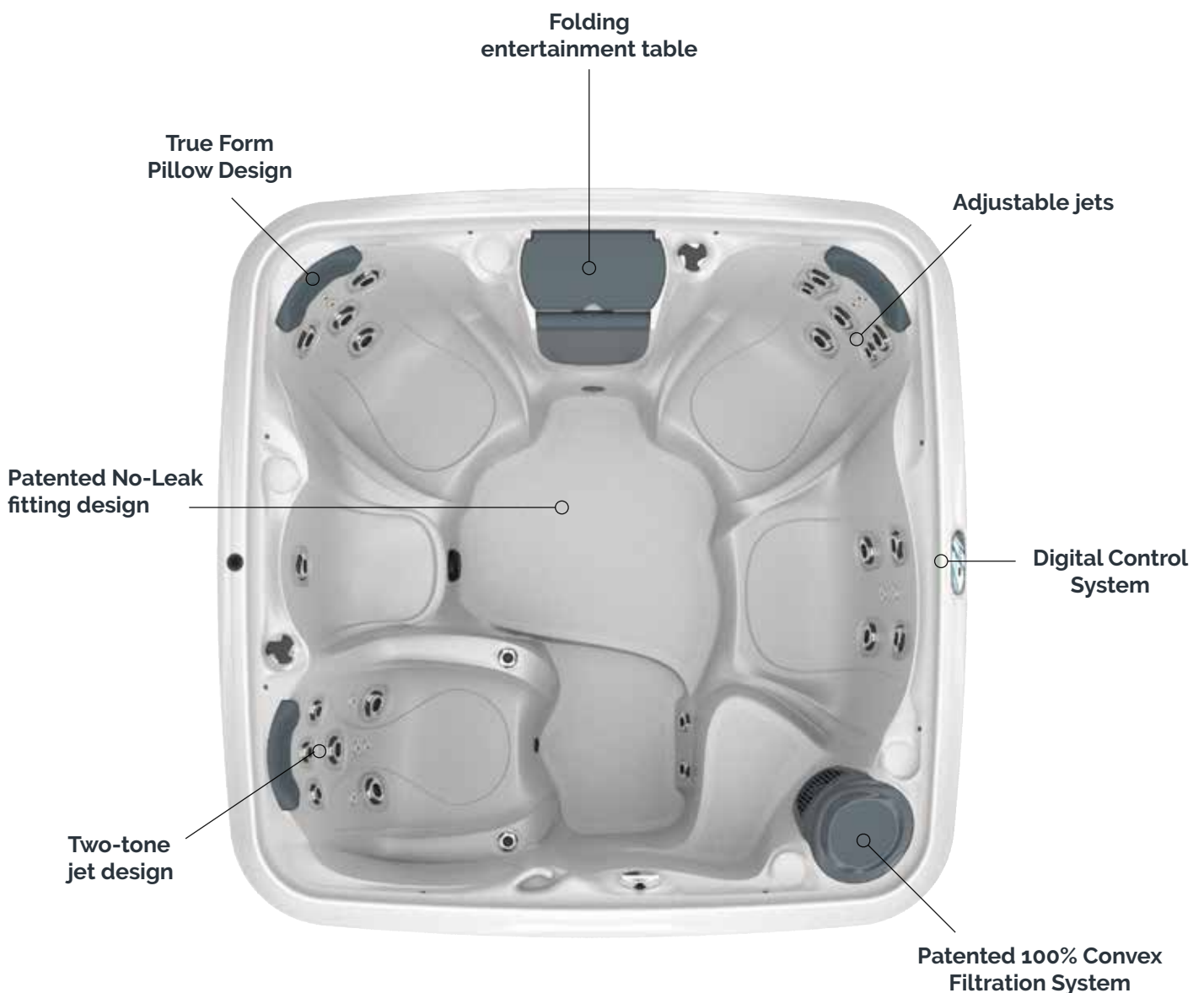


**YOUR EVERYDAY
STAYCATION
LOCATION.**



Beautiful in simplicity, yet so complete

Now you can have it all... and more. This revolutionary spa is designed to be the ultimate entertainment hub, bringing the best of a vacation right to your garden. Built with supreme enjoyment in mind, your Cabana Collection Spa comes with integrated features like the built-in cooler and a fold-up table, and so much more.



Additional Outstanding Features

Standard on all Cabana Spas

Digital Control System



Our Digital Control Systems make operating your spa temperature, jet speed and lighting easy.

Audio*



Bluetooth Audio System.

Folding entertainment table



Folding entertainment table and deep pocket cooler sit conveniently between the lounge and bucket seat ready for games, refreshments or snacks.

Fountain feature



Fountain feature with controllable flow and 9 programmable LED colour options.

Weathershield Super Seal Cover



Weathershield Super Seal Cover material for greater all-weather protection.

LED corner lights



8 Exterior LED corner lights.

Pillow



True Form Pillow Design.

Integrated Umbrella*



Integrated Umbrella included, made with Weathershield material for all-weather protection.

Filtration



100% Filtration.

LED Light



LED Footwell Light for an underwater glow.

LED Perimeter Lighting*



Illuminate your evening spa experience with the LED Ambiance Lighting Package.

*Optional feature

Cabana accessories

Cabana Spas can be extended with the following accessories.



Spa handrail



Spa Cover Lifter



Basic step grey



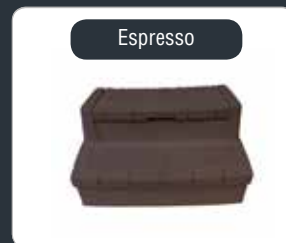
Basic step brown



Deluxe step



Deluxe step



Deluxe step



Deluxe step



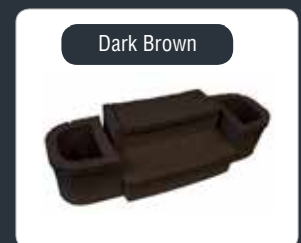
Steps with planters



Steps with planters



Steps with planters



Steps with planters



Filter element



Filter element

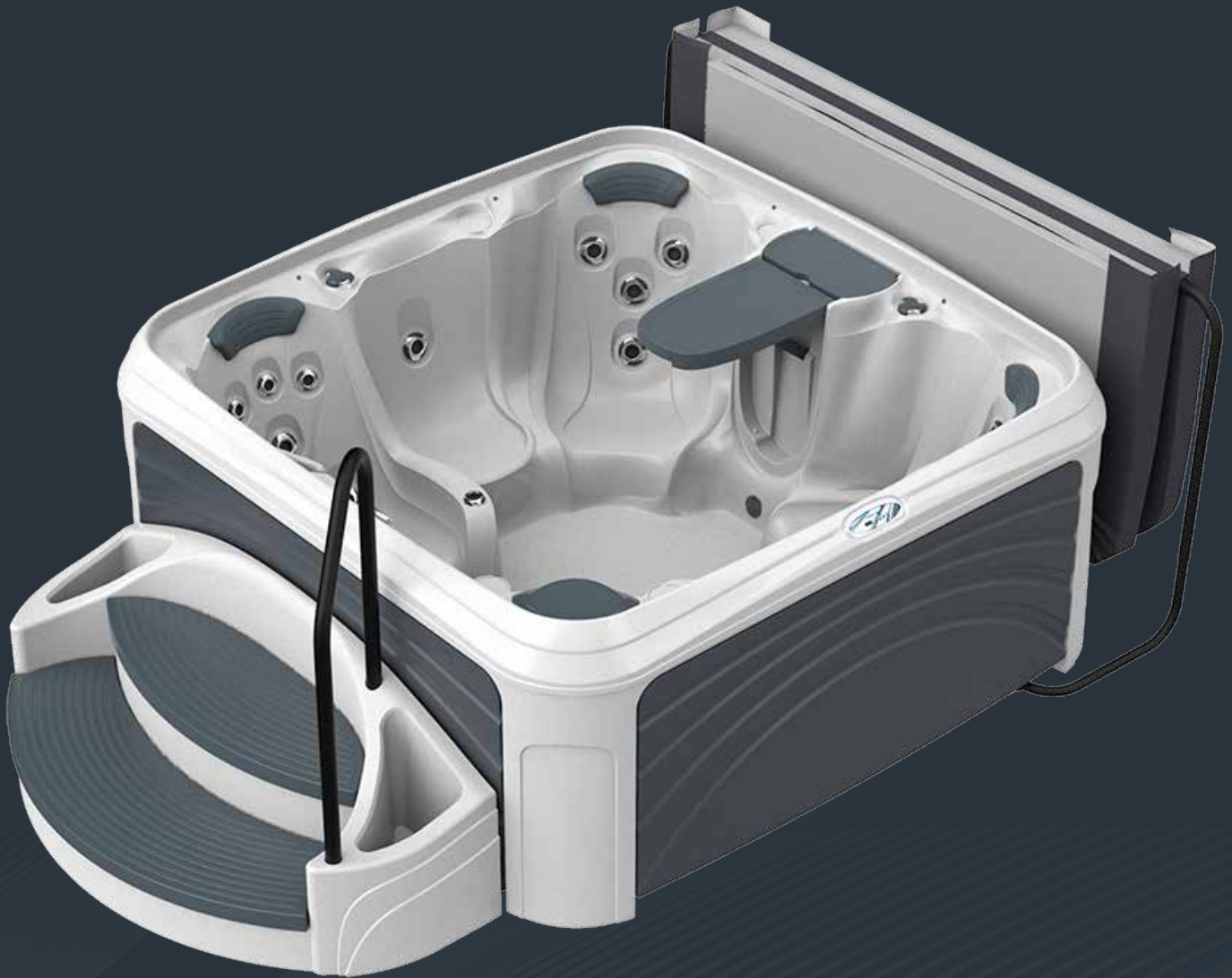


Pillow

Or choose All-Inclusive!*

with the addition of the Suite Package, which includes:

- ✓ Large Luxury Step with integrated, lockable planters
- ✓ Handrail
- ✓ Cover lifter



*The Suite Package Steps are delivered in the same colour combination as your spa, making it the most complimentary option you can choose.

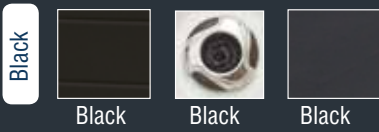
Colour Options

Spa Body, Panels, Cover, Jets and Pillows

White Diamond Body



Panels Jets / Pillows Cover



White Diamond Body



Panels Jets / Pillows Cover



White Diamond Body



Panels Jets / Pillows Cover



Mystic Diamond Body



Panels Jets / Pillows Cover



Sahara Diamond Body



Panels Jets / Pillows Cover



Black Diamond Body



Panels Jets / Pillows Cover



Black Diamond Body



Panels Jets / Pillows Cover



Specifications & features:

Category		2500 L 1 Pump	3500 L 2-Pump-version	2500 S 1 Pump	3500 S 2-Pump-version
Design & comfort	Seating	4	4	5-6	5-6
	Dimensions*	203 x 203 x 86 cm	203 x 203 x 86 cm	203 x 203 x 86 cm	203 x 203 x 86 cm
	Lounge	✓	✓		
	Pillows	3	3	3	3
Style	Cabinet / Colours	5	5	5	5
	Deluxe Syncrylic Colours	3	3	3	3
Construction	Dry weight	189 kg	198 kg	189 kg	198 kg
	Water capacity	1189 Litres	1189 Litres	1189 Litres	1189 Litres
	Uni-Body	✓	✓	✓	✓
	Polyurethane Foam Insulation	✓	✓	✓	✓
Ambiance & Entertainment	LED Main Light	✓	✓	✓	✓
	LED-Waterfall	✓	✓	✓	✓
	LED-Interior Perimeter	Optional	Optional	Optional	Optional
	LED-Corner Lights	✓	✓	✓	✓
	Bluetooth / MP3	Optional	Optional	Optional	Optional
	Cooler	✓	✓	✓	✓
	Table	✓	✓	✓	✓
Performance	Jet pump(s) / HPR	2 Spd - 3 HPR	1 x 2-Spd & 1x 1-Spd - 3 HPR	2 Spd - 3 HPR	1 x 2-Spd & 1x 1-Spd - 3 HPR
Hydrotherapy	Stainless steel jets	25	35	25	35
Water Care	Filtration	30 SQ FT	30 SQ FT	30 SQ FT	30 SQ FT
	Ozone	✓	✓	✓	✓
Convenience & Technology	Digital control	✓	✓	✓	✓
	Heater	3kw	3kw	3kw	3kw
	Electrical	230V	230V	230V	230V
Quality	Warranty	5 / 2 / 1 year	5 / 2 / 1 year	5 / 2 / 1 year	5 / 2 / 1 year

*Dimensions vary +/- 1,25 cm.

• Specifications, including dimensions, weight and volume will vary and are subject to change without notice. Colours may be different than shown.

Cabana™

COLLECTION & SUITES

Made With Sustainable
Syncrylic™



YOUR EVERYDAY
STAYCATION
LOCATION.



Manufactured in Lake Mary, Florida, USA.
©2018 Dream Maker Spas. All rights reserved.

www.dreammaker-spa.eu
In cooperation with Interhiva BV

