

Stonehenge

COLLECTION

Made with
Sustainable

Syncrylic[™]



TM



StonehengeTM

COLLECTION



Choose from four distinct models for your preferred style, size and price!

Enjoy a relaxing oasis in your own garden with the Stonehenge Collection, our most popular spa line for families. With a unibody construction, this easy-to-install, energy efficient spa is built with lasting durability in mind. Easy to own, affordable to operate and durable enough to withstand some of the harshest climates.

*All Models
come
Plug & Play
at 230V/16A
with 2kW
heating*



Odyssey

5-6 Person Spa with Comfort Lounge



Big EZ

6-7 Person Entertainer for Maximum Room



EZ-Spa

4-5 Person Family Spa with Bench Seat



EZL-Spa

3-4 Person Family Spa with Lounge

Select between four *Syncrylic™* contemporary spa body colours and your choice of Brick or Wicker textured panels

White Diamond



Black Diamond



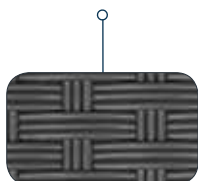
Mystic Diamond



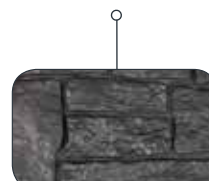
Sahara Diamond



Wicker Side Panel Style



or Brick Side Panel Style







Stonehenge

COLLECTION

Made with Sustainable
Syncrylic



Odyssey

The ODYSSEY is Dream Makers Spas' 5-6 person "LOUNGER" spa with Comfort Back Water Stream contoured seats. Each spa comes with directional jet faces that can be individually controlled to increase or decrease the desired massage action. With a unibody construction that is virtually indestructible, this energy efficient model comes with a Weathershield Cover, Digital Controls, Easy Klean / Convex2 Filtration with Multi-colour underwater LED lighting. You gain all the benefits of a luxury spa at a fraction of the price. The easy to install, lightweight and plug and play design makes the ODYSSEY perfect for lounging and entertaining.

SPECIFICATIONS

Seating:	5 – 6 person with lounge	Controls:	Digital
Dimensions:	208 x 208 x 81 cm**	Pump:	1 x two speed pump - 2 HP
Spa Volume:	904 litres	Ambiance:	Multi-colour underwater LED lighting
Dry Weight:	152 kg	Filtration:	Easy Klean / Convex2
Jets:	21 Stainless Steel	Insulation:	Polyurethane Foam
Pillows:	3	Ozone:	Included
Electrical:	230V PH-N-PE		
Heating:	2kW		

*Optional Suite Package shown.

**Specifications subject to change. Dimensions vary 1,25 cm.

Stonehenge COLLECTION

Made with
Sustainable
Syncrylic™



*

Big EZ

The BIG EZ is Dream Maker Spas' 6-7 person spa with four Comfort Back Water Stream contoured seats. Each spa comes with directional jet faces that can be individually controlled to increase or decrease the desired massage action. With unibody construction that is virtually indestructible, this energy efficient model comes with a Weathershield Cover, Digital Controls, Easy Klean / Convex2 Filtration with Multi-colour underwater LED lighting. You gain all the benefits of a luxury spa at a fraction of the price. The easy to install, lightweight and plug and play design makes the BIG EZ perfect for family and entertaining.

SPECIFICATIONS

Seating:	6 – 7 person	Controls:	Digital
Dimensions:	208 x 208 x 81 cm**	Pump:	1 x two speed pump - 2 HP
Spa Volume:	950 litres	Ambiance:	Multi-colour underwater LED lighting
Dry Weight:	142 kg	Filtration:	Easy Klean / Convex2
Jets:	23 Stainless Steel	Insulation:	Polyurethane Foam
Pillows:	4	Ozone:	Included
Electrical:	230V PH-N-PE		
Heating:	2kW		

*Optional Suite Package shown.

**Specifications subject to change. Dimensions vary 1,25 cm.



EZL Spa

Recline in the EZL SPA, the 3-4 person spa with two Comfort Back Water Stream contoured seats plus a full-size lounge. Each spa comes with directional jet faces that can be individually controlled to increase or decrease the desired massage action. With unibody construction that is virtually indestructible, this energy efficient model features a Weathershield Cover, Digital Controls, Easy Klean / Convex2 Filtration with Multi-colour underwater LED lighting. You gain all the benefits of a luxury spa at a fraction of the price. The easy to install, lightweight and plug and play design makes the EZL SPA perfect for family and entertaining.

SPECIFICATIONS

Seating:	3 – 4 person with lounge	Controls:	Digital
Dimensions:	200 x 175 x 81 cm**	Pump:	1 x two speed pump - 2 HP
Spa Volume:	716 litres	Ambiance:	Multi-colour underwater LED lighting
Dry Weight:	125 kg	Filtration:	Easy Klean / Convex2
Jets:	16 Stainless Steel	Insulation:	Polyurethane Foam
Pillows:	N/A	Ozone:	Included
Electrical:	230V PH-N-PE		
Heating:	2kW		

*Optional Suite Package shown.

**Specifications subject to change. Dimensions vary 1,25 cm.



EZ Spa

The EZ SPA is Dream Maker Spas' 4-5 person spa with two Comfort Back Water Stream contoured seats plus a family bench-style seat. Each spa comes with directional jet faces that can be individually controlled to increase or decrease the desired massage action. With unibody construction that is virtually indestructible, this energy efficient model features a Weathershield Cover, Digital Controls, Easy Klean / Convex2 Filtration with Multi-colour underwater LED lighting. You gain all the benefits of a luxury spa at a fraction of the price. The easy to install, lightweight and plug and play design makes the EZ SPA perfect for family and entertaining.

SPECIFICATIONS

Seating:	4 – 5 person	Controls:	Digital
Dimensions:	200 x 175 x 81 cm**	Pump:	1 x two speed pump - 2 HP
Spa Volume:	681 litres	Ambiance:	Multi-colour underwater LED lighting
Dry Weight:	127 kg	Filtration:	Easy Klean / Convex2
Jets:	16 Stainless Steel	Insulation:	Polyurethane Foam
Pillows:	N/A	Ozone:	Included
Electrical:	230V PH-N-PE		
Heating:	2kW		

*Optional Suite Package shown.

**Specifications subject to change. Dimensions vary 1,25 cm.



Outstanding Features on Stonehenge Spas

100% Filtration



The EZ Kleen Convex 2 100% Water Filtration system eliminates the need for annoying footwell suction.

Super Seal Cover



Super Seal Weathershield Cover design reduces heat loss.

Water Stream Channels



Two tone stainless steel jets with the unique Comfort Back Water Stream channels water action up the full length of the back.



True Form Pillows**

The True Form Pillow** provides additional comfort when you lay back for a relaxing soak.

*Optional feature

**Standard on Big EZ and Odyssey models only.



Stonehenge accessories

The Stonehenge Spas can be extended with the following accessories.



Spa handrail



Spa Cover Lifter



Basic step grey



Basic step brown



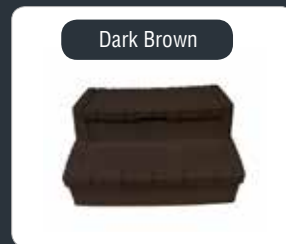
Deluxe step



Deluxe step



Deluxe step



Deluxe step



Steps with planters



Steps with planters



Steps with planters



Steps with planters



Filter element



Filter element



Pillow

Or choose All-Inclusive!*

with the addition of the Suite Package, which includes:

- ✓ Large Luxury Step with integrated, lockable planters
- ✓ Handrail
- ✓ Cover lifter



*The Suite Package Steps are delivered in the same colour combination as your spa, making it the most complimentary option you can choose.

Specifications by Model and Size



Odyssey



Big EZ



EZ Spa



EZL Spa

Seating	5 – 6 person with lounge and bucket seats	6 – 7 person with bucket seats	4 – 5 person with bench and bucket seats	3 – 4 person with lounge and bucket seats
Dimensions*	208 x 208 x 81 cm	208 x 208 x 81 cm	200 x 175 x 81 cm	200 x 175 x 81 cm
Spa Volume	904 Litres	950 Litres	681 Litres	716 Litres
Dry Weight	152 kg	142 kg	127 kg	125 kg
Stainless Jets	21	23	16	16
Electrical	PH-N-PE 230V	PH-N-PE 230V	PH-N-PE 230V	PH-N-PE 230V
Heating	2kW	2kW	2kW	2kW
Digital Controls	Included	Included	Included	Included
Pump 2 HPR	Included	Included	Included	Included
LED underwater lighting	Included	Included	Included	Included
EZ Kleen / Convex2 Filtration	Included	Included	Included	Included
Polyurethane Foam	Included	Included	Included	Included
Super Seal Cover	Weathershield	Weathershield	Weathershield	Weathershield
LLDPE Pillows	3	4	N/A	N/A

*Specifications subject to change. Dimensions vary 1,25 cm.

Colour Options

Spa Body, Panels, Cover, Jets and Pillows



White Diamond

Black Diamond

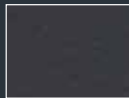
Sahara Diamond

Mystic Diamond



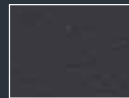
Grey Brick

Black Cover



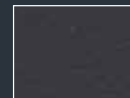
Grey Brick

Black Cover



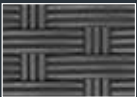
Dark Brown Brick

Black Cover



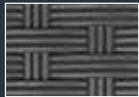
Black Brick

Black Cover



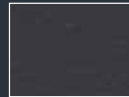
Grey Wicker

Black Cover



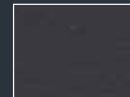
Grey Wicker

Black Cover



Dark Brown Wicker

Black Cover



Black Wicker

Black Cover



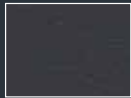
Espresso Brick

Black Cover



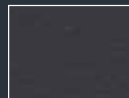
Black Brick

Black Cover



Espresso Wicker

Black Cover



Black Wicker

Black Cover



Black Brick

Black Cover



Black Wicker

Black Cover

Stonehenge

COLLECTION



Manufactured in Lake Mary, Florida, USA.
©2018 Dream Maker Spas. All rights reserved.

www.dreammaker-spa.eu
In cooperation with Interhiva BV

